

Thurrock Strategic Transport Model

Tom van Vuren

Regional Director, UK and Europe

Veitch Lister Consulting

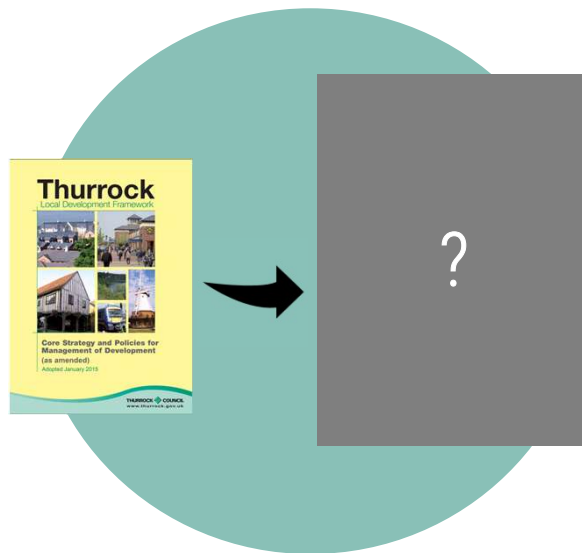


THURROCK STRATEGIC TRANSPORT MODEL

Local Development Plan Task Force Meeting | 26 September 2022

Tom van Vuren, Technical Director | Grace Solsby, Project Manager

Why build a Thurrock Transport Model?



To produce **transport evidence** to inform the preparation of the Thurrock Local Plan

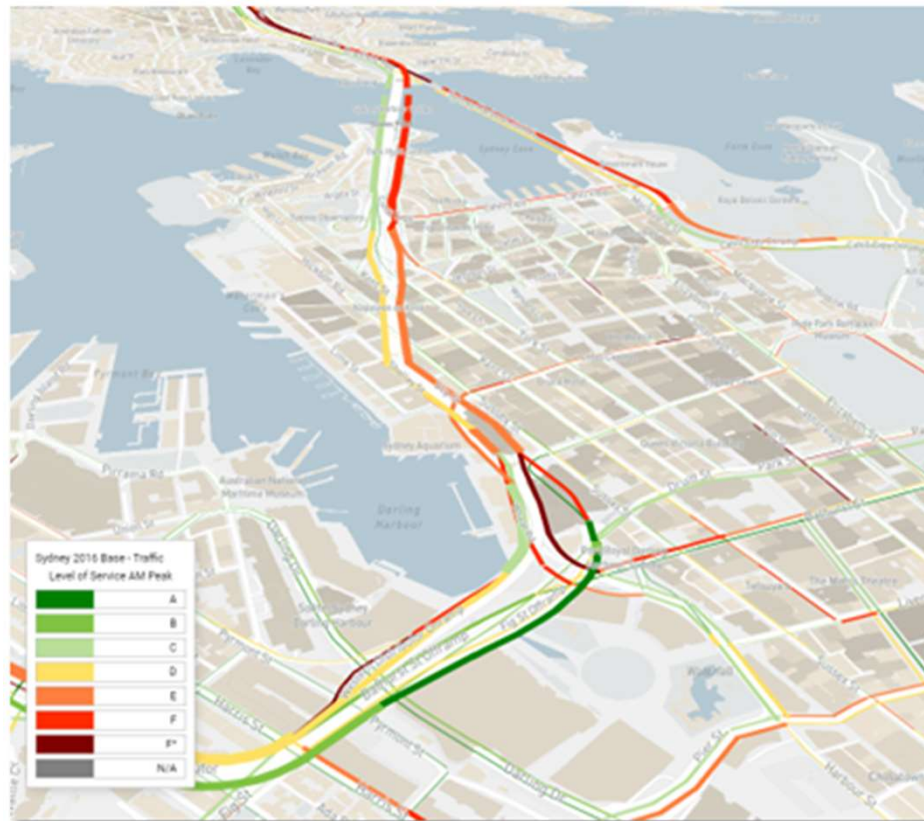


To support potential **business case development** for transport interventions related to the Local Plan

What is a Transport Model?



To estimate the impact of future development proposals and the need for and effectiveness of alternative network configurations



- Develop a simulation of the current travel patterns, traffic and public transport flows in Thurrock
- Estimate how future travel patterns, traffic and public transport flows will change
- Predict how new developments and new transport projects will affect these travel patterns, traffic and public transport flows

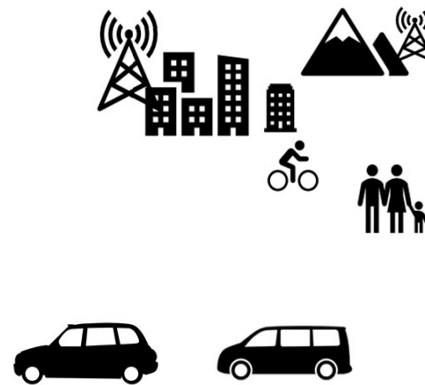
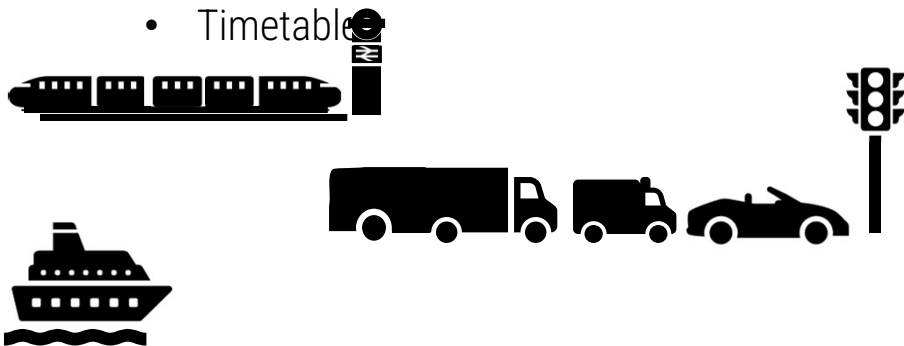
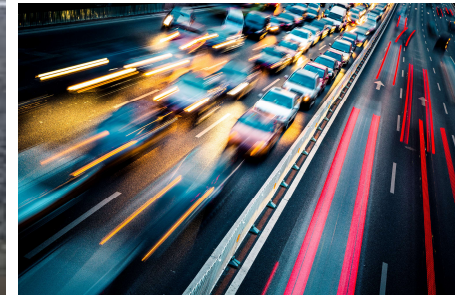
What data informs the Transport Model?

Travel patterns within, to and from Thurrock

- Mobile phone-derived data on how people travel in Thurrock
- Census data on where people live and work
- National Travel Survey
- Travel demand data from other models in the area

Traffic and public transport flows and travel times

- Traffic counts
- Public transport counts
- DfT journey time surveys
- Timetable



Confidential

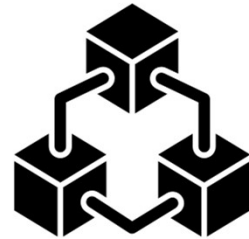


How does the model reflect travel decisions?



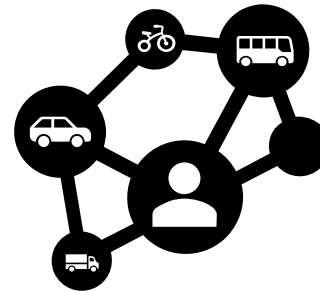
Trip generation

How many trips do people make? To reflect the impact of new housing and employment locations



Trip distribution

Where do people travel to? Allowing people to travel to new destinations, for example cross-Thames using LTC, but also to new employment opportunities



Mode choice

Which mode do they use. To reflect future shifting to or from car, dependent on congestion but also transport plans, such as better cycling facilities or more frequent buses

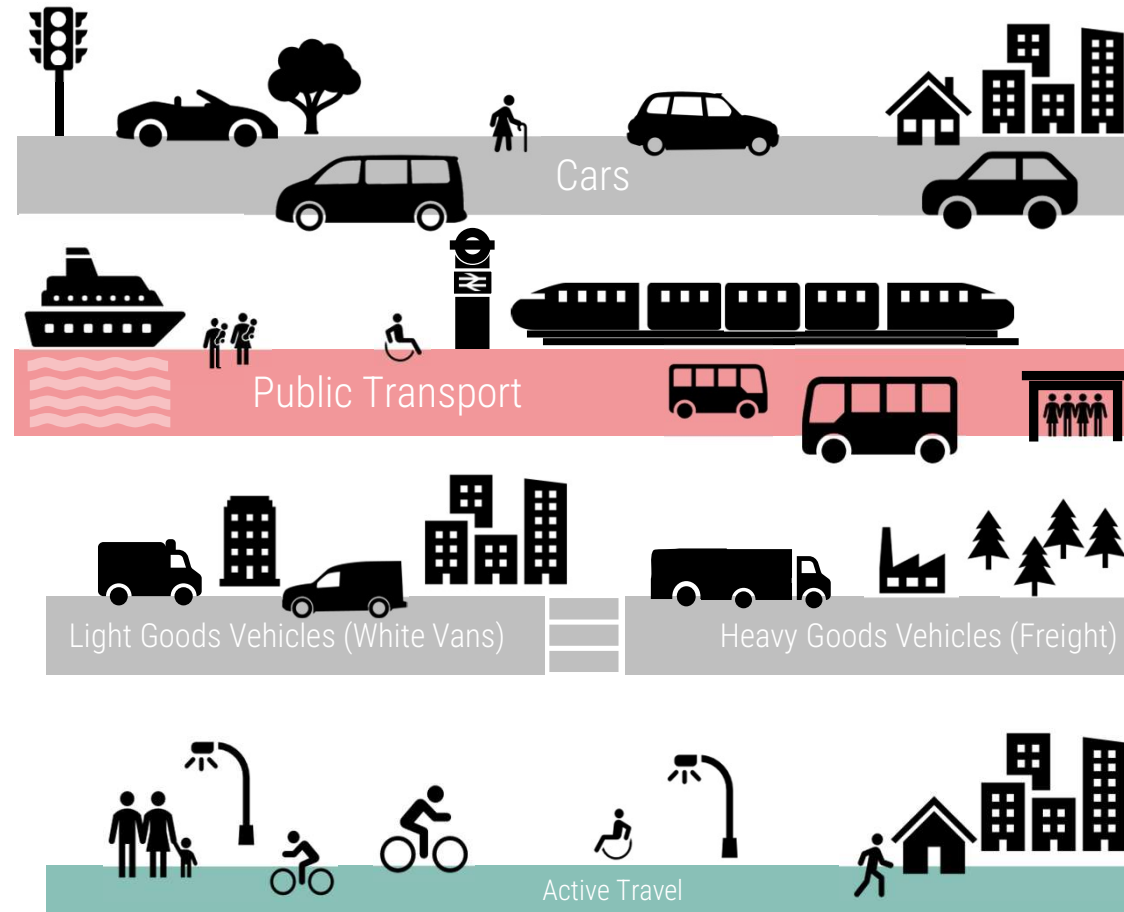
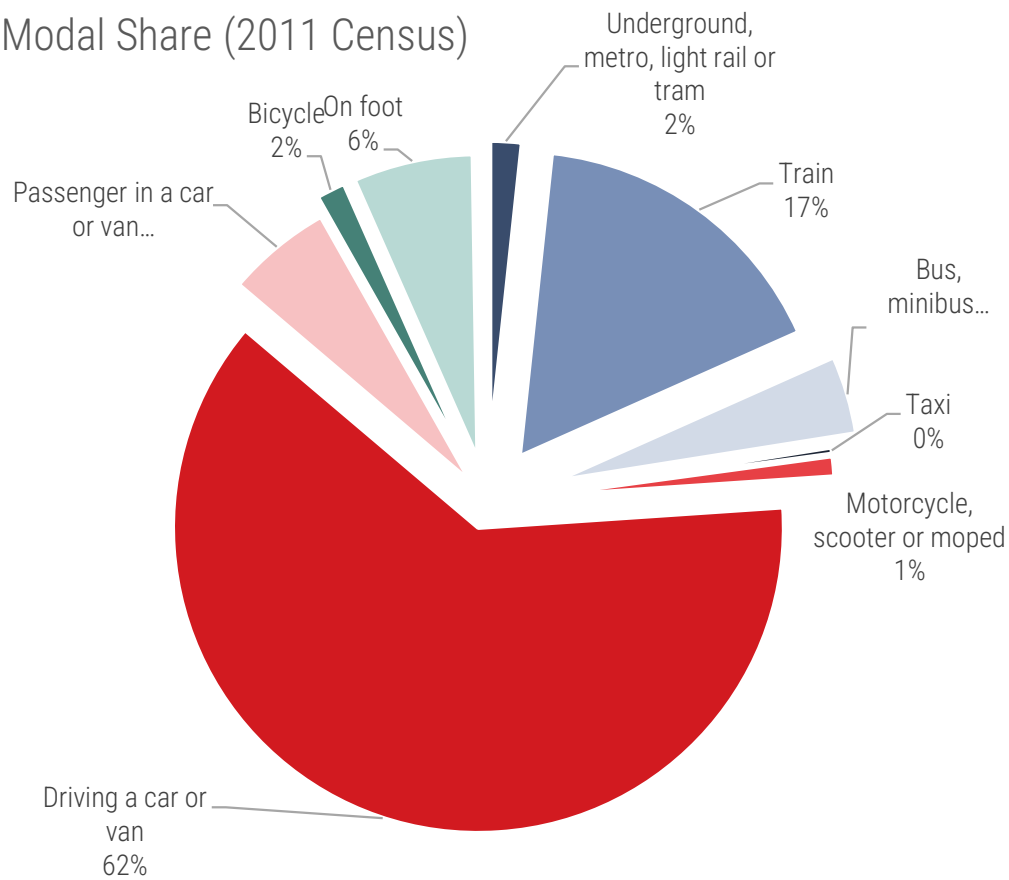


Routing

To calculate the impact on congestion of new or improved roads, but also new or improved public transport routes

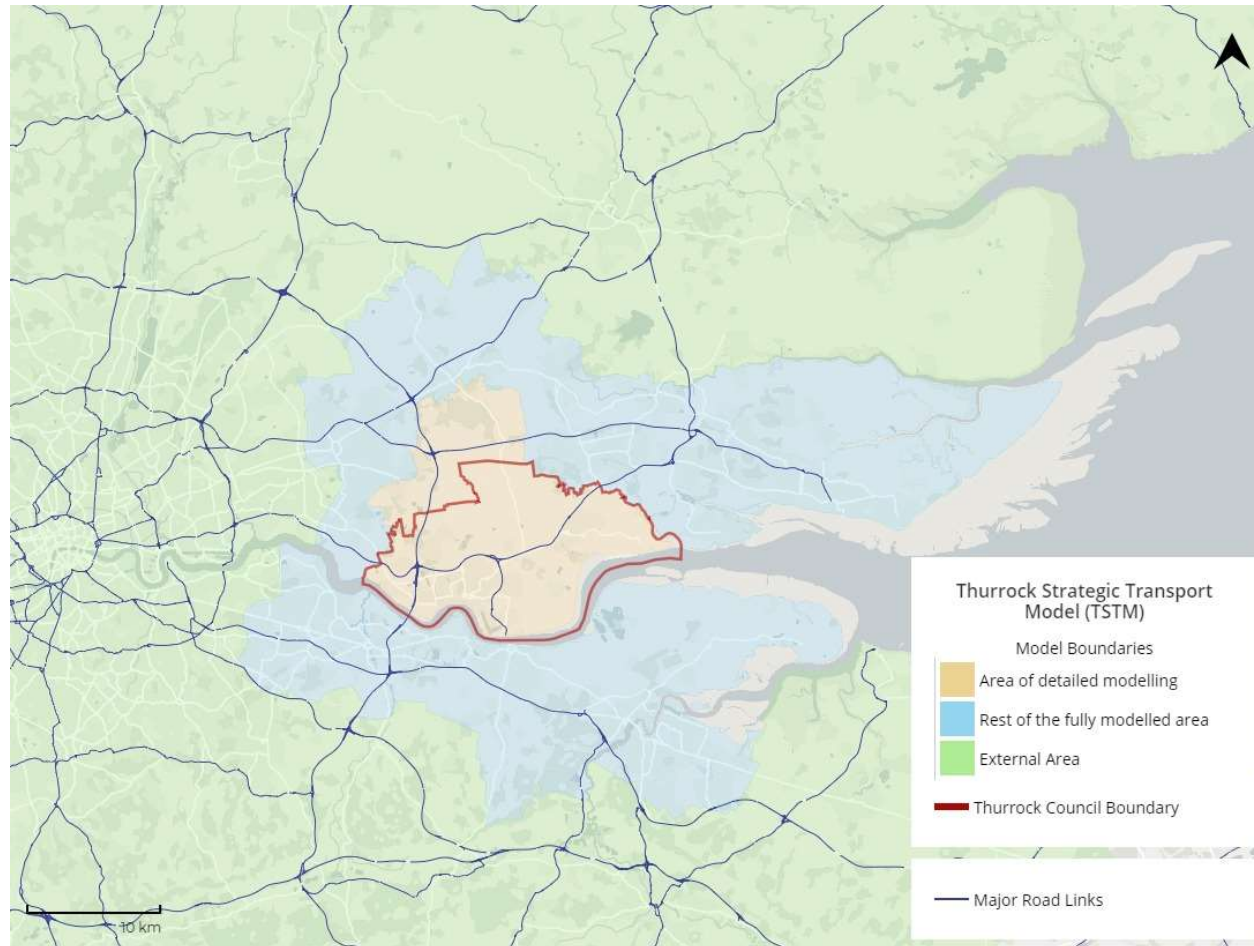
What travel modes are included?

Modal Share (2011 Census)



Confidential

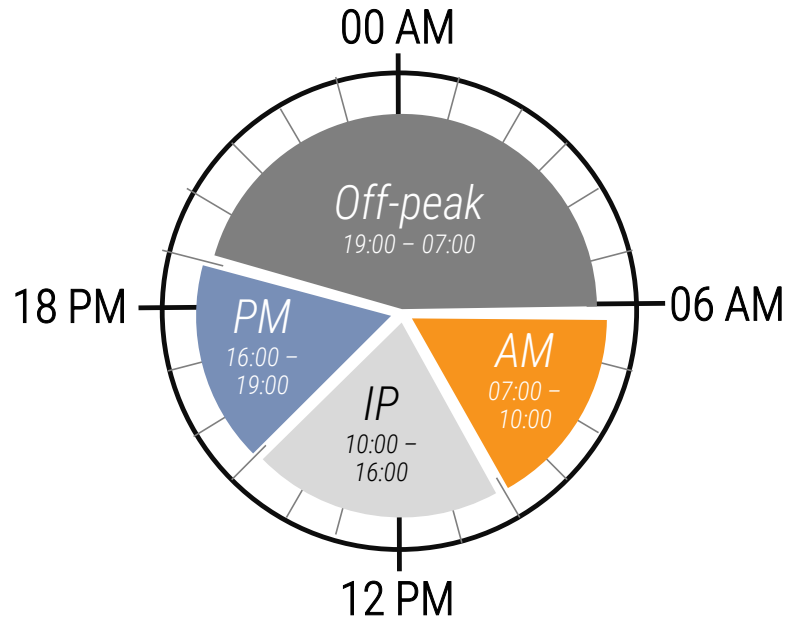
What area is covered?



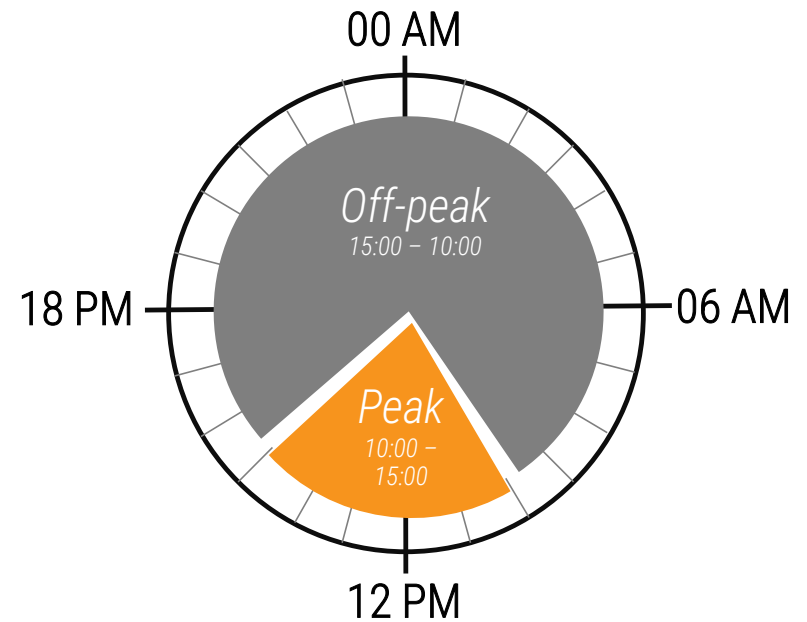
What time periods are covered?



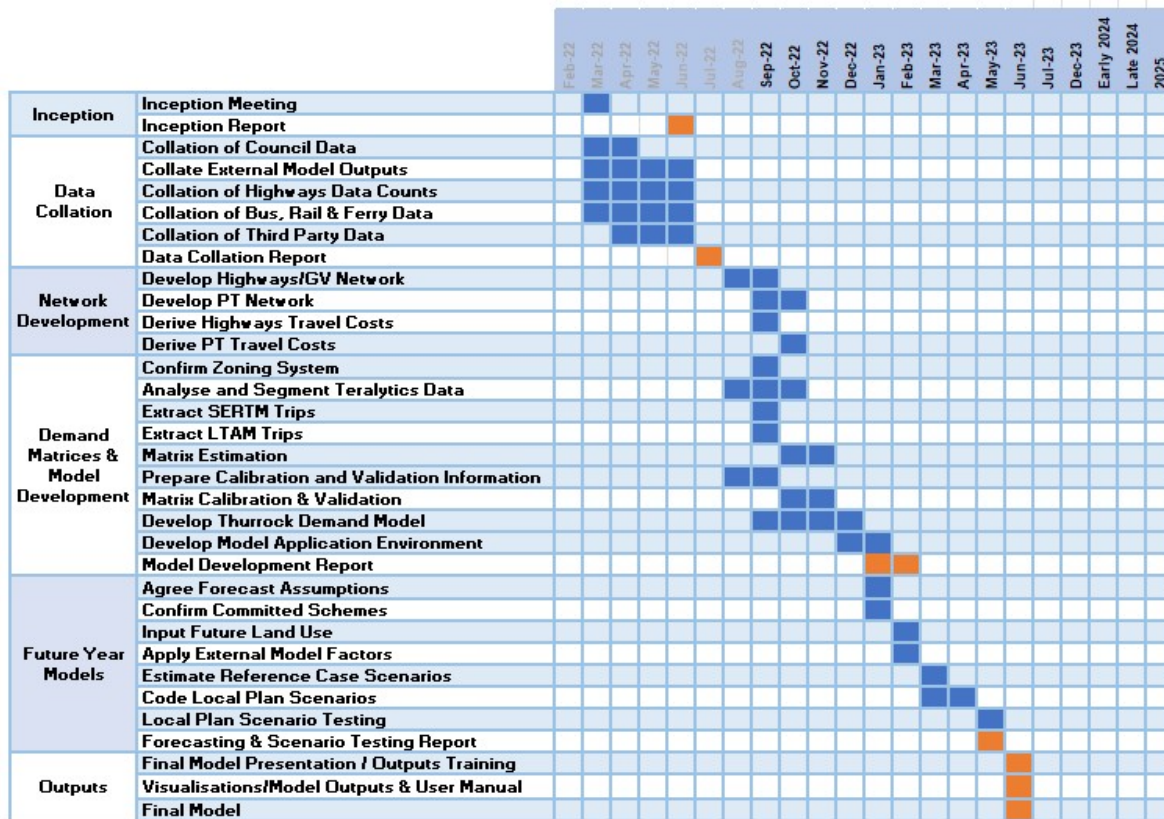
Weekday



Saturday



Current Timetable



Transport Model Timeline

- Inception (Feb – Jun 2022)
- Data Collation (Feb – Jul 2022)
- Model Development (Jul 2022 – Jan 2023)
- Finalised Base Year Model (Jan 2023)
- Future Year Model Development (Jan 2023– May 2023)
- Delivery of Outputs and Visualisation Tool (Jun 2023)